

Ronda, Cueva del Gato and Molino del Santo

Walking - Moderate



This popular walk combines the joys of a pleasant walk through beautiful Andalusian countryside with a finale of delicious refreshments or lunch at the renowned Molino del Santo hotel restaurant, as a reward for your efforts on the trail.

We leave Ronda down an old cobbled road which goes below the gorge and Puente Nuevo bridge, then we cross the fertile valley below the town for spectacular views back up to the town on its clifftop plateau. We then head out through open countryside towards the Guadiaro river to follow its path through the valley. We include a brief stop at the Cueva del Gato, a local beauty spot. This large opening in the rockface marks the end of the 8km underground journey of thousands of litres of water which have poured down through the limestone mountains to create a waterfall and beautiful pool of crystal clear (but very cold!) water. We continue a short distance to the small village of Benaolán, where we can relax on the hotel terrace beside the clear tumbling stream which originally powered this converted mill's wheel.

Distance: 14km
Time: 3-4 hours
Ascent: 194 metres
Descent: 461 metres
Max Alt: 731 metres
Start: Ronda
Finish: Benaolán Estacion

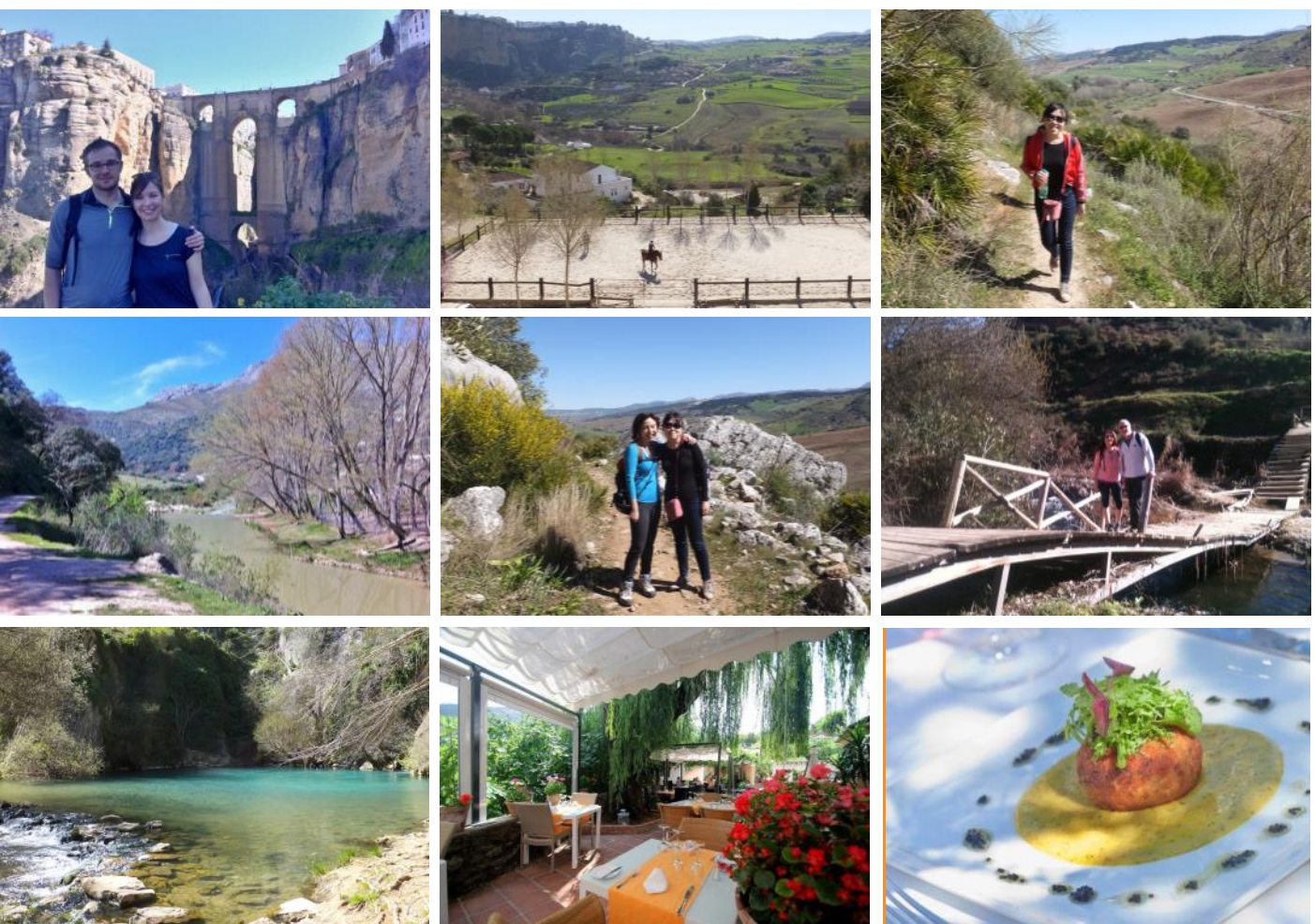
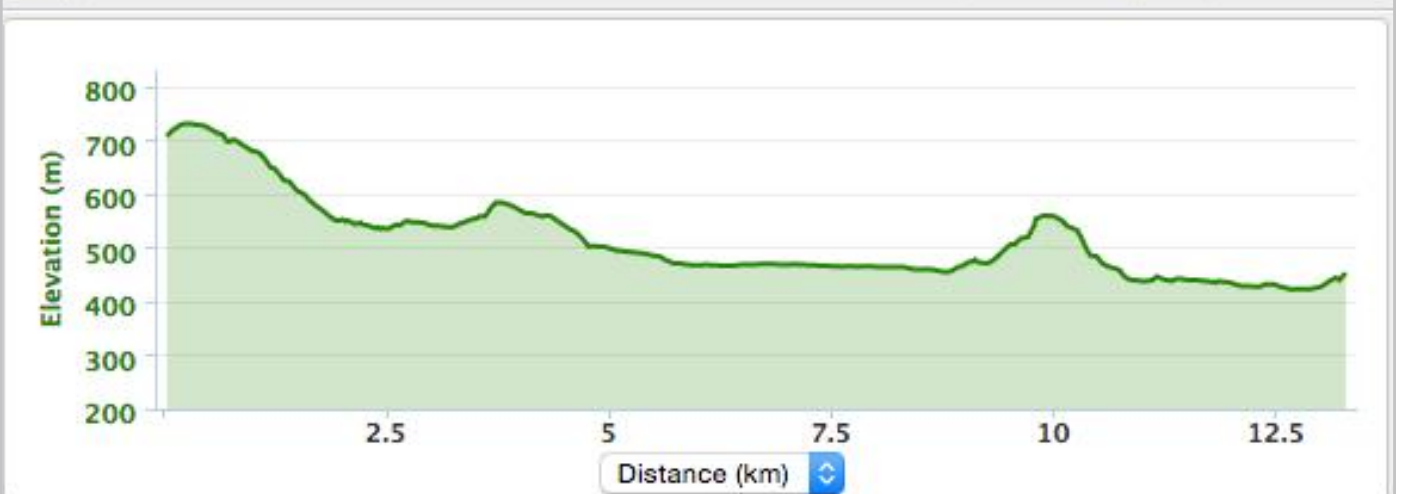
Included in our prices:

- Transport back to Ronda
- English speaking guide

[CONTACT US](#)

€45 p.p.*

* price is based on a minimum of 2 people.



Tel: 0034 638 873 279 [email: info@hikeandbikeholidays.com](mailto:info@hikeandbikeholidays.com)

Hike + Bike The Sierras, 5 Plaza Prado Viejo, 29400 Ronda

Activ Turismo No. AT/MA/00221