

Ronda Circular 18km

Mountain Bike - Easy



This short, easy ride takes us on a circular tour through the rural countryside close to Ronda. We cycle past olive groves and vineyards, via holm oak woods and arable farmland, with views out towards the mountains of the Sierra de las Nieves. Along the way we ride under the remains of a Roman aqueduct, past our favourite Ronda bodega and stop at an old drovers' watering fountain before returning to Ronda.

We ride along dirt tracks and farm roads, so the surface varies and is a little bumpy in places but there is nothing too challenging and the short distance keeps this ride easily manageable.

Distance:	18km
Time:	1.5 - 2 hours
Ascent:	127 metres
Descent:	123 metres
Max Alt:	796 metres
Start:	Ronda
Finish:	Ronda

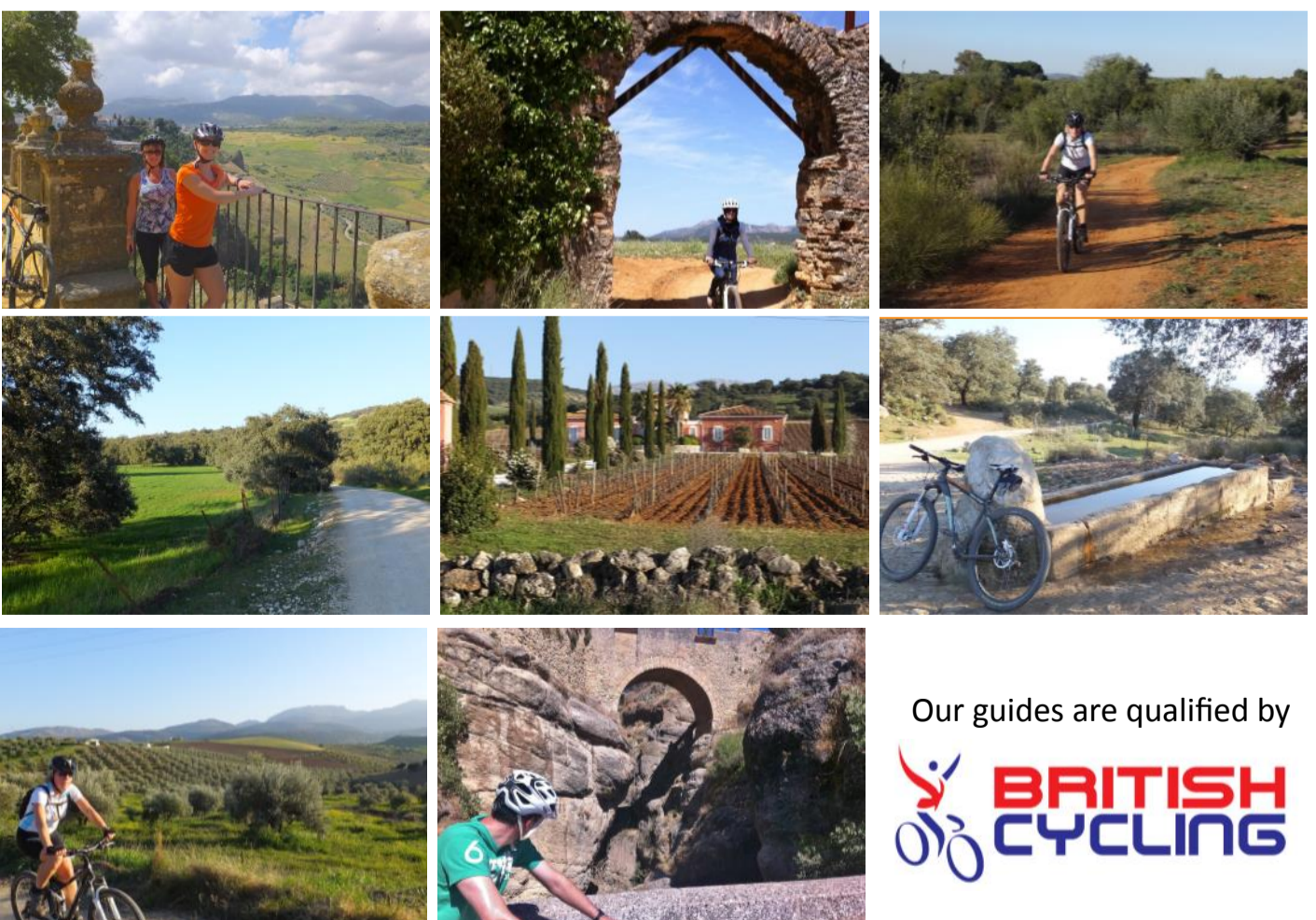
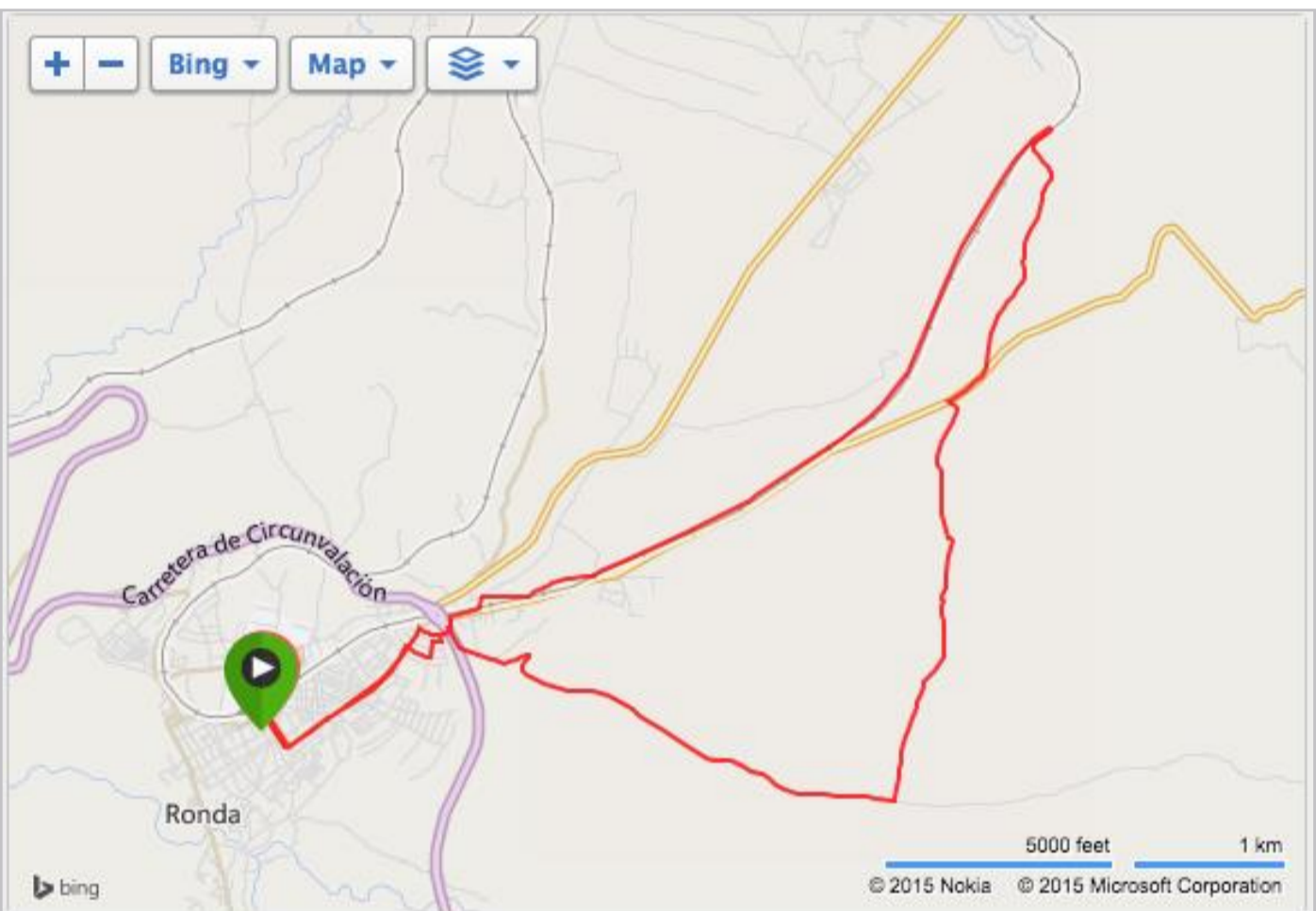
Included in our prices:

- British Cycling qualified guide
- Bike
- Water Bottle
- Helmet

[CONTACT US](#)

€45 p.p.*

* price is based on a minimum of 2 people.



Our guides are qualified by



Tel: 0034 638 873 279 [email: info@hikeandbikeholidays.com](mailto:info@hikeandbikeholidays.com)

Hike + Bike The Sierras, 5 Plaza Prado Viejo, 29400 Ronda
Activ Turismo No. AT/MA/00221