

El Chorro

Mountain Bike - Moderate to Challenging



This is a classic cross country ride through isolated hillside landscapes on the way to Andalucía's very own lake district and to the famous El Chorro gorge. We use a mixture of tracks and single track, cycling out into open country with mountain ranges all around, and you will enjoy amazing vistas which stretch on forever. The grade is classed as challenging due to the distance and some technical sections closer to the lakes.

We head to the Victorian era Kings' Dam, the first dam in the creation of this lake-filled region, and then take a quick spin on singletrack through the local forest. We finish near the dramatic gorge of El Chorro, a narrow river channel which cuts between two 150m tall limestone cliffs, with views of the recently restored Caminito del Rey walkway, perched high up on the inside of the cliff.

If you enjoy being out in the wilds and covering some cross country miles through hill top pine forests, this ride is for you.

Distance: 49km
Time: 5-6 hours
Ascent: 689 metres
Descent: 1432 metres
Max Alt: 1060 metres
Start: Near EL Burgo
Finish: El Chorro

Included in our prices:

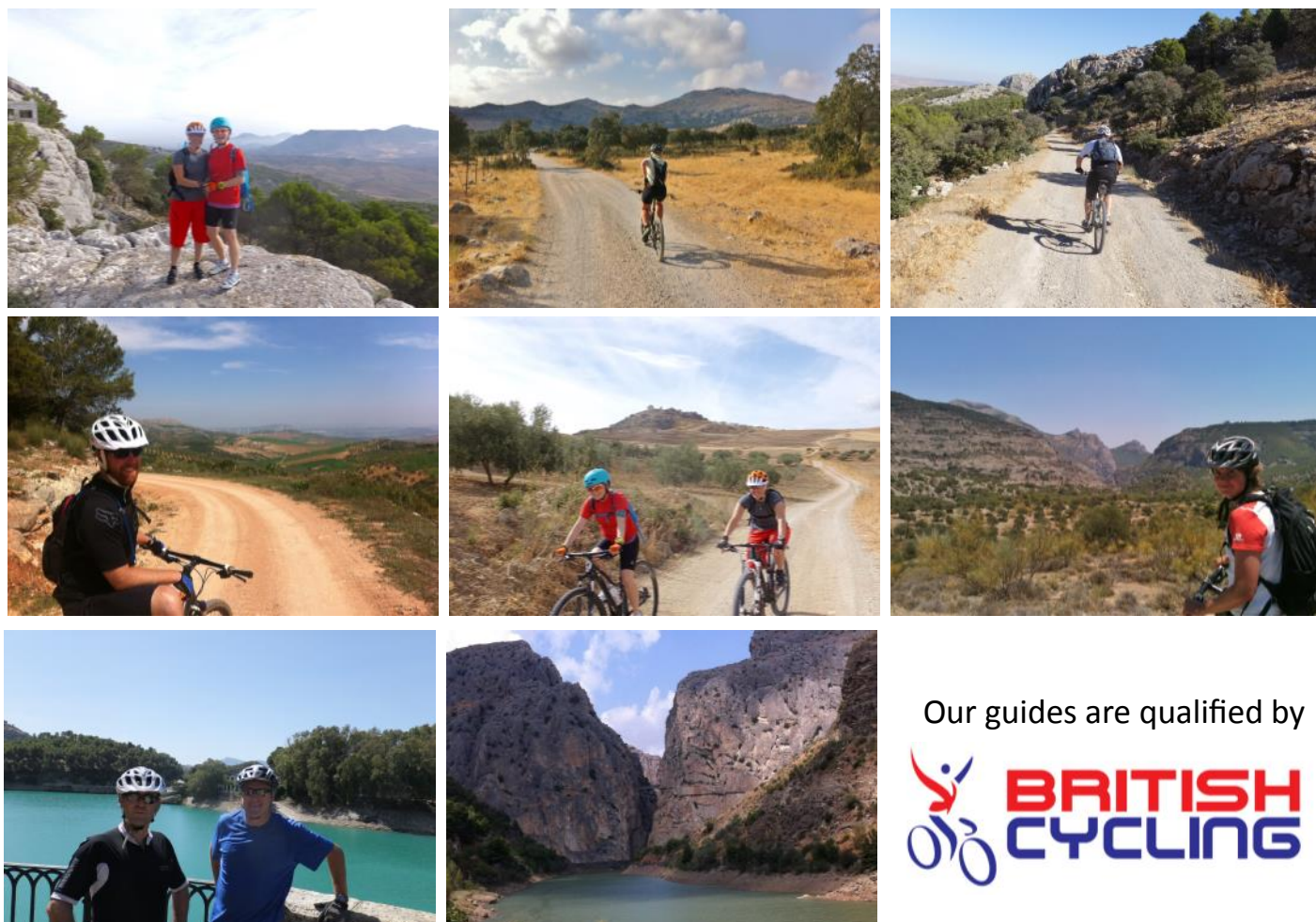
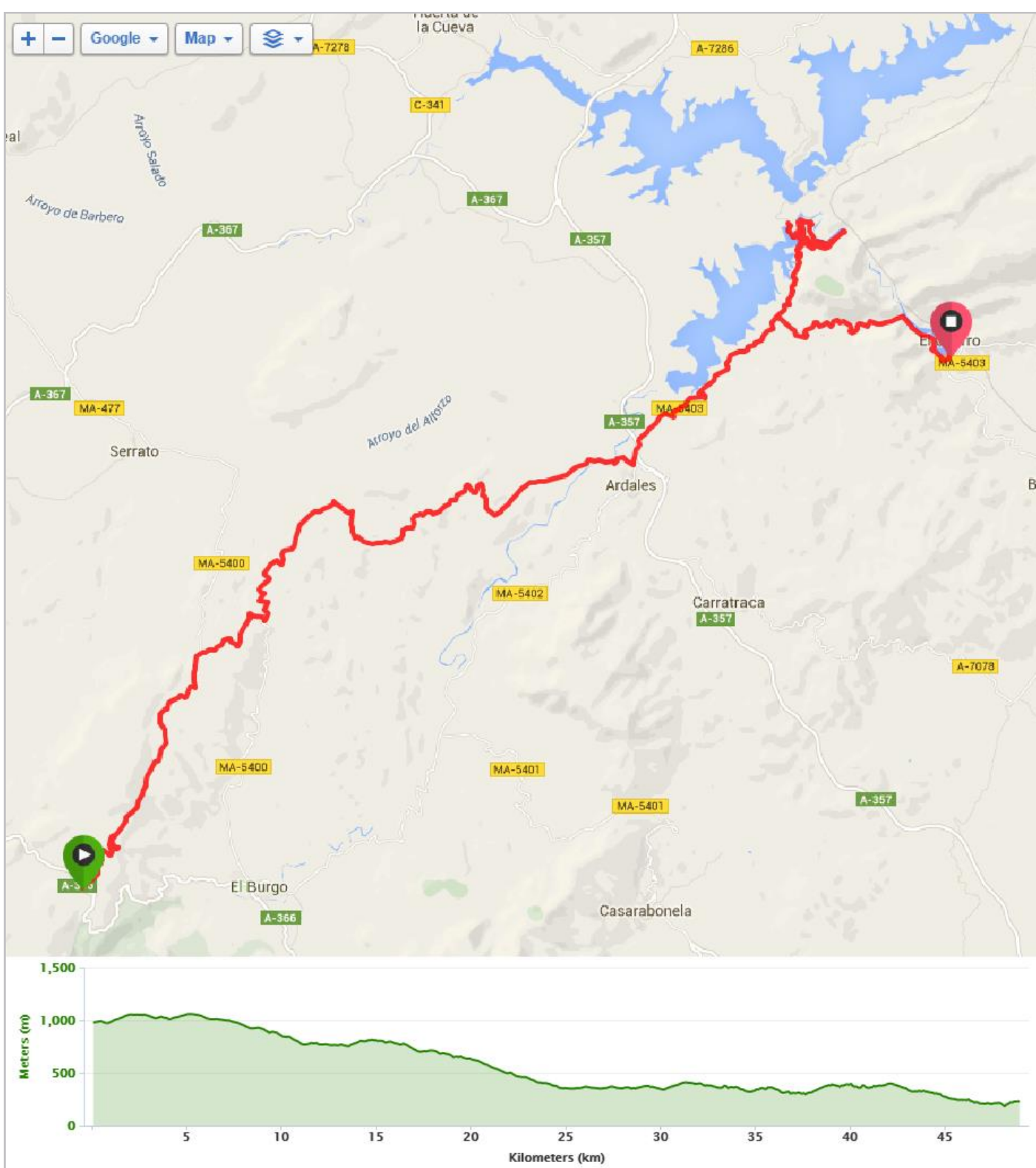
- Transport to startpoint and return to Ronda
- British Cycling qualified guide
- Bike
- Water Bottle
- Helmet

CONTACT US

€65 p.p.* / €75 p.p.**

* Price for 3 people or more

** Price for 2 people



Our guides are qualified by



Tel: 0034 638 873 279 [email: info@hikeandbikeholidays.com](mailto:info@hikeandbikeholidays.com)

Hike + Bike The Sierras, 5 Plaza Prado Viejo, 29400 Ronda
Activ Turismo No. AT/MA/00221